

# Fact Sheet on Education Emergency Response

Reporting Period: November 30–December 9, 2024

## Key updates from Educational Institutions:

### General Education & Center for Educational Research and Development (CERD):

In continuation of the webinars conducted by the Directorate General of Education and the Center for Educational Research and Development (CRDP), the second week covered the following topics:

- Organize content through Classwork & Assignments
- Access and Navigate the MADRISTI Platform and discover E-lessons

CERD is providing support to teachers, parents and students on how to use the digital platforms:



#### Synchronous Support (Office Hours)

CERD trainers will be available to provide support online by sharing their screens as well as showing the steps for accessing and using the platforms.



#### Asynchronous Support (Forum)

CERD trainers will create a forum for teachers, parents and students to post questions offline and receive responses. This will allow anyone accessing the forum to benefit from the questions raised and answers provided.


The digital learning webinars for public school teachers using Microsoft Teams are still ongoing.


**Technical and Vocational Education:**  
Five public technical and vocational schools across all governorates in Lebanon are still being used as shelters. Currently, 10,000 students are attending in-person classes, while 25,000 students continue online learning.

**Lebanese University:**  
♦ The Lebanese University resumed in-person learning and laboratory work in most of its branches.

## Key Decisions & Milestones:

 The Ministry of Education will continue to **ensure education with flexibility following the ceasefire.**

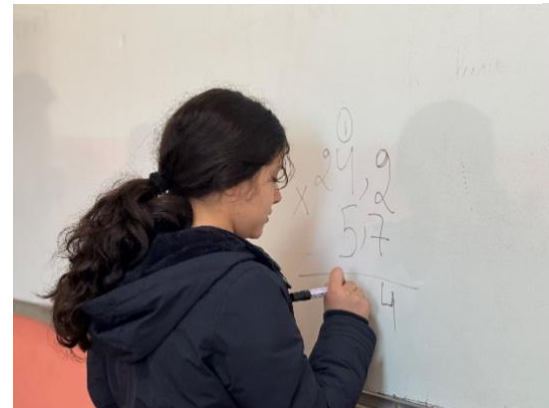
 MEHE is now in the process of:  
1) **Revising the EECRP key activities and costing** in light of the ceasefire, taking into consideration learning continuity to complete the academic year 2024-25.

 2) **Conducting preliminary assessment for damages at public educational establishments** in order to identify the immediate repairs needed and the longer-term construction to be planned.

At the start of 2025, public schools will revert to a 28-hour weekly schedule, discontinuing the current 21-hour weekly schedule.



**Dedicated Staff, Inspired Students:  
Together, We Achieve Excellence in Education**



## Data Wall

*\*Note: All figures below are subject to change and may be revised based on the changing context.*

As of November 30, 2024	
Educational Institutions	Number of Registered Students
Public Schools	277,761
Public technical and Vocational Schools	38,000
Lebanese University	64,000
<b>35,387 Public school teachers and staff registered for AY 2024-25</b>	

School Assessment on the "Day After" (Preliminary assessment completed by MEHE)				
Region	Not Damaged	Damaged partly and cannot fully start teaching	Fully damaged and cannot resume teaching	Still used as a shelter
Beirut	27	28	0	0
Mount Lebanon	227	22	2	3
North	345	75	1	0
Baalbek/Hermel	64	43	2	0
Beqaa	89	15	5	7
South	20	114	10	2
Nabatiyeh	36	52	13	2
<b>Total</b>	<b>808</b>	<b>349</b>	<b>33</b>	<b>14</b>